

# CONVENIENT DOWNTOWN ST. LOUIS LOCATION

6,650 sq. ft. for lease on first floor



## ***1530 SOUTH SECOND STREET***

*St. Louis, Missouri*

Lease this downtown location with plenty of on-site parking

- Totally renovated interior and exterior
- New or refurbished building systems
- Outside building signage
- Only minutes from Downtown St. Louis
- Near popular Soulard restaurants
- Close proximity to new Cardinals Stadium and Ballpark Village
- \$16.50/sq. ft. full service lease rate



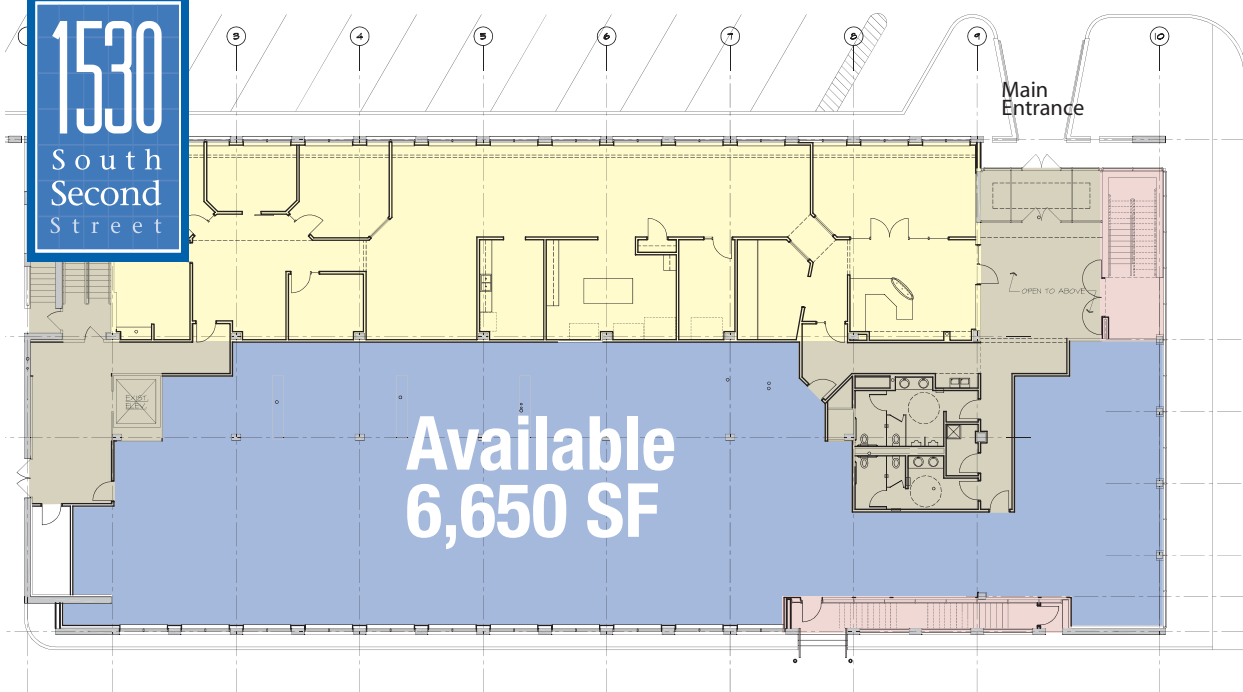
**Clark**PROPERTIES

A Real Estate Development, Management and Brokerage Company

**314-389-8822**

The information contained herein is not guaranteed and while gathered from sources believed to be reliable, the information should be verified prior to the close of transaction in connection herewith. Specifications may change at any time.

**1530**  
South  
Second  
Street



**First Floor Building Plan**

**Legend**

- Legacy Building Group (Suite 100)
- Common Areas
- Environmental Operations (to 2nd floor-Suite 200)
- Available Space



A view of the lobby area from the second floor.

**ClarkPROPERTIES**

A Real Estate Development, Management and Brokerage Company

5391 Brown Avenue *Phone:* 314.389.8822  
 St. Louis, Missouri 63120 *Fax:* 314.389.1765

[www.clark-properties.com](http://www.clark-properties.com)



**1530 South Second Street**